



BA Axial Piston Pumps



Axial Piston Pumps Description and Characteristics

DESCRIPTION

This new generation of products combines the use of advanced materials, thermal treatments, and manufacturing processes, with a sophisticated computer assisted design.

The result is a pump specifically designed to be truck mounted, with the following advantages :

-Minimum Size.

Thanks to its design with inclined plate and pistons parallel to the shaft, and its reduced number of parts. For you to never have assembly problems.

-Maximum Reliability.

The new BA Pumps inherit the fame of sturdiness from their ancestors the BHE Pumps.

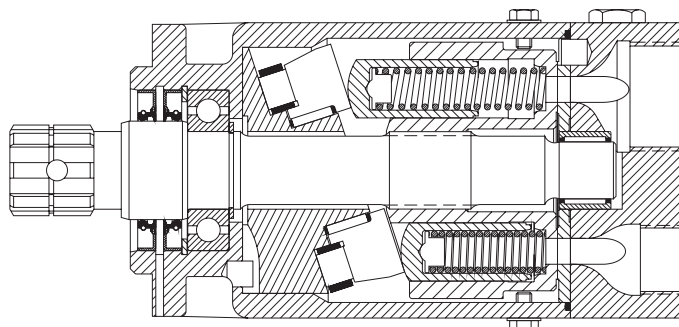
For this they have a design with the minimum amount of components, which means minimum probability of trouble. In addition, highly resistant materials have been used in the necessary places to ensure a long working life without problems. We have also used advanced thermal treatments which produce very great hardness on the surfaces most exposed to wear, especially with dirty oils. And if this were not enough, we have installed inside the pump a safety valve, so that not even accidental overloads can cause troubles.

-High performances.

350 Bar maximum pressure, 1500-1800 R.P.M. and high efficiency in the whole speed range. For your truck to stand up to everything.

-Accessories.

The pump includes as standard accessories included in the price, a suction pipe and a pressure limiting valve. Other accessories with over-price include outlet raccord, check valve (see section 9.) and power take-offs (see our separate catalog).



2.01.01



Axial Piston Pumps Description and Characteristics

TECHNICAL CHARACTERISTICS

Flow :

Five available flows : 20, 30, 40, 50 and 60 litres/min. at 1000 R.P.M.

Maximun continuous pressure : 250 Bar.

Maximun intermitent pressure : 350 Bar.

Speed :

Maximun continuous speed : 1500 R.P.M.

Maximun intermitent speed : 1800 R.P.M.

Rotation :

This can be modified, rotating the cover 180°, with a safety system which prevents the inner parts from moving. Two half arrows on body and cover indicate the rotation direction.

Assembly :

Direct on power take off, by ISO standard coupling of 4 holes and splined shaft. Assembly position indifferent.

Oil :

Use top quality mineral hydraulic oil, with viscosity at working temperature between 3 and 5°E (20 and 37 cSt.).
Maximun viscosity in cold start : 50°E (400 cSt.).

Filtering :

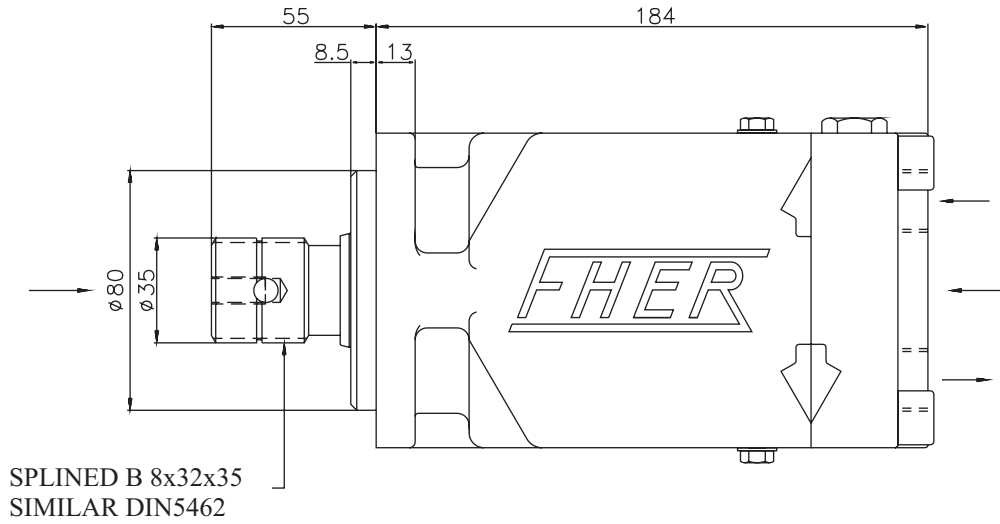
Good filtering will prolong the life of the pump decreasing wear. A 25 Micron or finer return filter is recommended.

Start up :

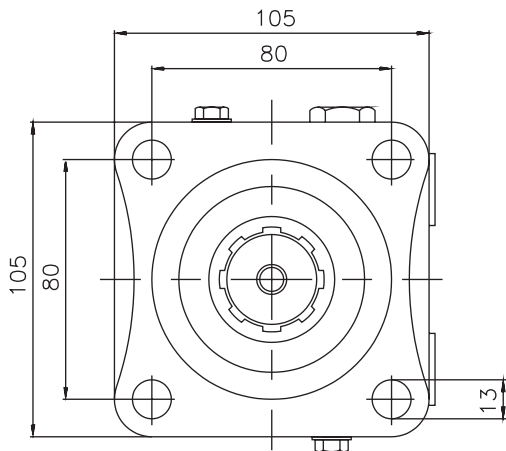
The BA pumps are self-aspirating, so the first start up does not pose difficulties, even with the tank lower than the pump. In extreme cases, it may be necessary to slightly loosen the outlet piping to permit the air to be released.



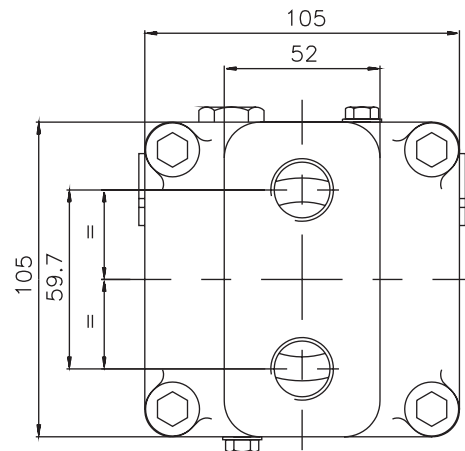
Axial Piston Pumps BA-40, BA-30, BA-20 General Dimensions



VIEW FROM Y



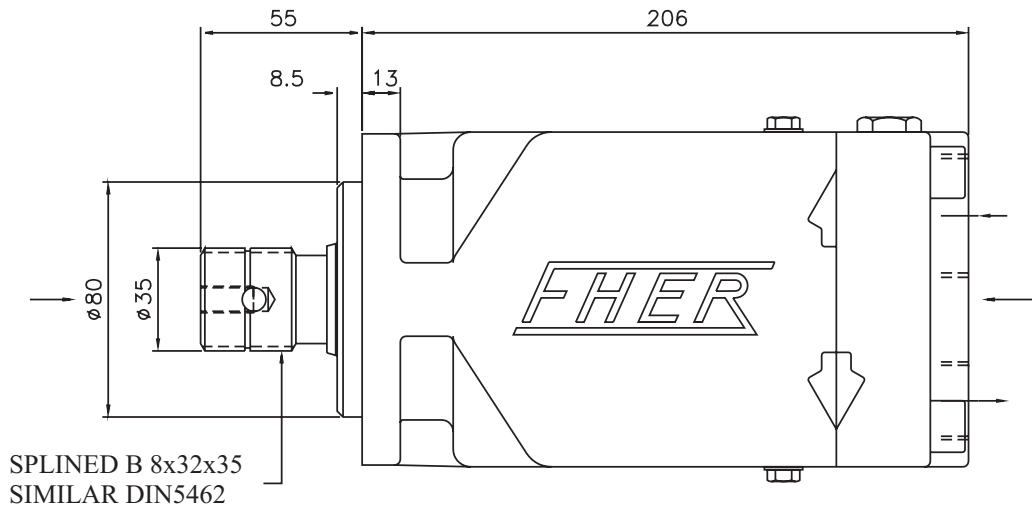
VIEW FROM X



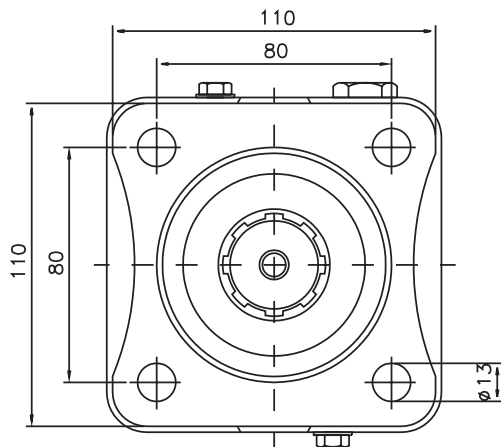
MODEL	FLOW VOLUME at 1000 rpm.	ENTRY (E)	OUTLET (S)
BA-20	20 l./min.	1"BSP	1/2"BSP
BA-30	30 l./min.	1"BSP	1/2"BSP
BA-40	40 l./min.	1"BSP	1/2"BSP



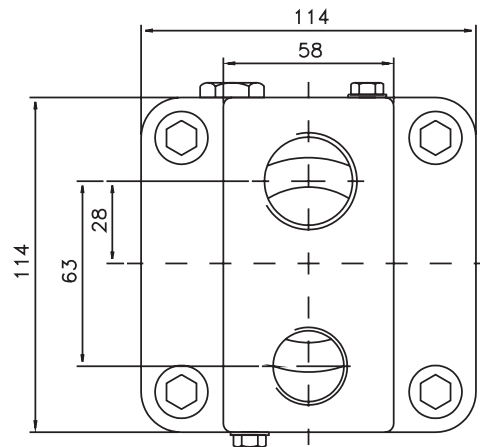
Axial Piston Pumps BA-60, BA-50 General Dimensions



VIEW FROM Y



VIEW FROM X



MODEL	FLOW VOLUME at 1000 rpm.	ENTRY (E)	OUTLET (S)
BA-50	50 l./min.	1 1/4" BSP	3/4" BSP
BA-60	60 l./min.	1 1/4" BSP	3/4" BSP